



Vendor Management Services

Precisely what you need. Exactly when you want it.



Spring is here! Forecast calls for destructive lightning in the morning, hurricane-force winds by lunch, followed by blizzard-like conditions for the drive home...perfect...

Ever wonder if the weather forecasters are just randomly picking next day weather from a hat – just like the supplier that shows up with the “newest” product every day of the week.



Vendor Management –
control access, tooling costs, and the weather...
OK, that's pushing it a little.

Contact your EM Precise representative if you'd like to find out more about how Vendor Management can;

- improve your operational efficiency
- lower your tooling costs
- help you control and manage your tooling

Let EM Precise Vendor Management help you avoid those end-of-month invoice shocks – with key information from your Matrix, you can avoid those small eruptions from upstairs when it comes time to pay the bills.



What's on tap?

Danger Will Robinson!
Danger! – receiving alerts from the Matrix

Jackpot! This machine is paying out! – controlling use of your high value items

A Site for sore eyes – using site mapping

Announcements

Please visit us at www.emprecise.com to stay up-to-date on our promotions, which could save you hundred\$, or even thousand\$.

Contact

Guy Salisbury
Vendor Management
Services Supervisor
Cell: 905.512.6176
Fax: 905.664.5504
gsalisbury@emprecise.com



Follow us

follow us on :





Vendor Management Services

Precisely what you need. Exactly when you want it.

Danger Will Robinson! Danger!

Yes, that's right. The Matrix is not just a pretty face – it's a communicator. And, what it has to say can save you time and money. Now, a lot of that information needs to be pulled from it – which is not a big chore. But, for those of you who have more than enough to do, the Matrix can be set up to send out nine different alert types/reports. The number of relevant alerts will depend on how fully implemented your Matrix unit is within your operations, but even the "Manual Alert" can remind you that certain things need to be taken care of.

To set up the specific alert you want to see, look for the "Tools" menu option along the top ribbon, after logging into the management software. Select the "Alerts" sub menu and then click on the "Scheduler". If you have set up scheduled reports, this will be very familiar. Select the alert type. Set the recipient, the day and time, and enter any other email addresses you would like the alert to go to in the "cc" field.

As a suggestion, make sure to check the "Do not send/save if empty" option on the page. If this option is checked, the alert will only be sent if it has relevant data to report. This option helps prevent overloading your inbox with empty files – but, maybe a full inbox will help make your boss think you're working hard...

Once you click the "save" icon, it's always a good idea to push the alert through. Assuming there is data to be sent, this is a good way to check that everything is working. It will also allow you to see what the alerts will look like. Remember – alerts are much the same as pre-configured reports.

Contact

Guy Salisbury
Vendor Management
Services Supervisor
Cell: 905.512.6176
Fax: 905.664.5504
gsalisbury@emprecise.com



Follow us

follow us on :





Vendor Management Services

Precisely what you need. Exactly when you want it.

VENDOR MANAGED SERVICES OFFERS:

More effective use of space

More efficient use of time

More control

More savings

More choice

Problem 1: With a fast-growing number of tools in Company A's tool crib, **efficient management of the tools became impossible. Tools were regularly lost or misplaced, employee time was wasted.**

Solution: Management installed an **automated tool dispensing system**, eliminating the need for a manual tool crib.

Results: With the new system, **Company A calculated its return on investment at less than 12 months.**



Problem 2: Manufacturer B was **buying new tools too rapidly. Tool breakdowns** were very costly, often **bringing production to a standstill.**

Solution: Tool Supplier C installed **electronically-controlled tool dispensers** and maintained stock levels based on automatically generated usage reports, giving operators the "time sensitive" tooling they needed.

Results: Manufacturer B no longer purchases new tools before they actually need them, **saving thousands of dollars a year.** Machine operators can **replace broken or malfunctioning tools in a fraction of the time** that they used to.



Contact

Guy Salisbury
Vendor Management
Services Supervisor
Cell: 905.512.6176
Fax: 905.664.5504
gsalisbury@emprecise.com



Follow us

FOLLOW US ON :





Vendor Management Services

Precisely what you need. Exactly when you want it.

Jackpot! This machine is paying out!

Ahh, Las Vegas... home to one-armed bandits, same-day marriage-honeymoon-annulment vacation packages, and many a place that'll rob you blind – if you let them. To help avoid a Vegas vacation on your shop floor, you may want to consider making your tooling a little more secure.

Now, no arguments about it – the Matrix is designed to store your high-volume and high-value tooling, safely, while allowing only those users with correct permissions to access it. So, we can set things up whereby only lathes operators have access to lathe tooling, and those on mills have access to the milling tools. But, what if you have some particularly pricey tools in your Matrix – and, you don't want to come in on Monday morning and find out that the guys blew through seven of them over the weekend – in effect, someone hit the jackpot – and the house paid out...

The Matrix allows you to set up “Budget Groups”. Within the group, we define restrictions by item, by quantity, and by days. So, we can basically tell the Matrix that users are allowed to use X number of pieces in Y number of days. So, if the number of days is defined as 2, the system will check transactions for today and yesterday.

Item Code	Item Description	Quantity	Number Of Days
3201669	DemoDR-MF-10L-2.25D-12...	10	7
5605179	Demo APKT 1003PDR HM9...	30	7
3101694	Demo HM90 E90A-D32-4-W...	50	7
5502149	Demo TPGH 2-1-XL IC7...	30	7
1111111	kIT 1 Demo	20	7
5502097	Demo TPGH 2-1 IC20...	50	7

Quantity: Number Of Days:

It's important to note that setup requires specific items to be defined/added to the budget group, as well as quantity and length of budget period. This way, we can target the specific items that are of concern. Once the budget group is created, it is then tied to specific user groups. So this allows us to apply it to the basic user groups, while allowing admin users (tooling managers) freer access to items if/when needed.

Contact

Guy Salisbury
Vendor Management
Services Supervisor
Cell: 905.512.6176
Fax: 905.664.5504
gsalisbury@emprecise.com



Follow us

follow us on :





Vendor Management Services

Precisely what you need. Exactly when you want it.

Ever get that 'HULK SMASH!' feeling when searching for a tool?...



...yeah, we know how you feel...

Let us bring peace to your tool crib



216A Arvin Avenue
Stoney Creek, ON
L8E 2L8
800.267.7569 ph
905.664.5504 fax

163 Cushman Road
St. Catharines, ON
L2M 6T4
905.988.5799 ph
905.988.1123 fax

www.emprecise.com



Contact

Guy Salisbury
Vendor Management
Services Supervisor
Cell: 905.512.6176
Fax: 905.664.5504
gsalisbury@emprecise.com



Follow us

FOLLOW US ON :





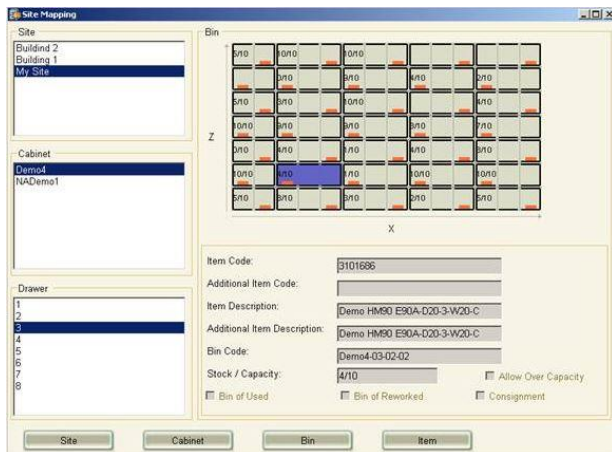
Vendor Management Services

Precisely what you need. Exactly when you want it.

A Site for sore eyes

These days, pretty-well everyone is using GPS for something – mostly to find their way around. It's pretty amazing having a machine tell you where and when to turn, as well as figure out the best way to get there – I still rely on my wife...

The Matrix offers a similar function in its site mapping. This is basically a picture of each drawer, showing you what tooling is contained in bins, as well as, how many pieces of each item are currently in stock. But, this function does not restrict the user to the cabinet directly in front of him/her. It allows the user to select any Matrix machine on the network – that includes those in other buildings, and at other sites.



Once you have selected the appropriate drawer, simply click on the bin you are interested in “looking at”. The lower part of the window will display the relevant item information, including whether the particular bin contains new, used, or reworked items. Clicking the “item” button will open the item maintenance window, where you can edit or check more detailed information on the tool. This is an extremely useful function to use when adding new items to the Matrix.

While this function may seem of limited use at first glance, this changes exponentially as your Matrix network grows. And, believe me. Once you start using it to add new tooling to the Matrix, it becomes indispensable. This function is also available to use from the Touch software, allowing admin users to check on things, without necessarily logging into the Management software.

Contact

Guy Salisbury
Vendor Management
Services Supervisor
Cell: 905.512.6176
Fax: 905.664.5504
gsalisbury@emprecise.com

Follow us

follow us on :

